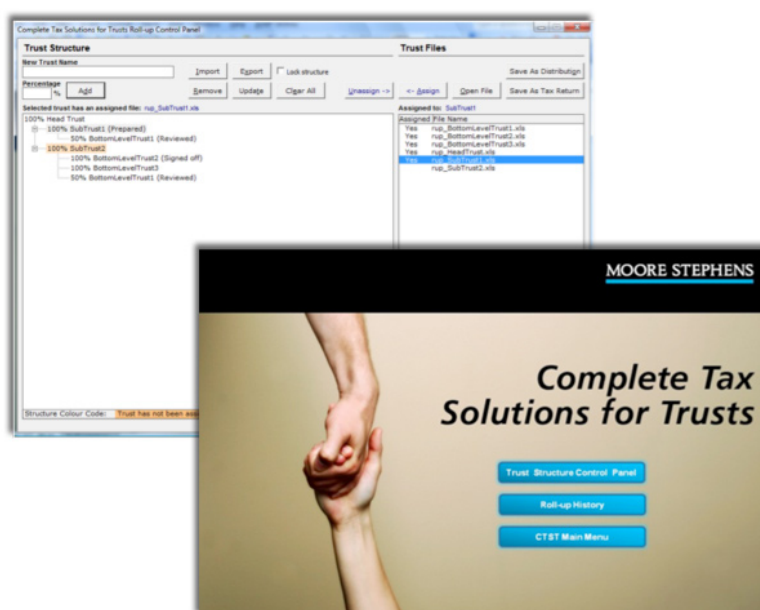




Complete Tax Solutions for Tax

Developed by Moore Stephens who are experts in property trusts and leading software providers, CTS for Trusts is a cost-effective software solution designed to take the hard work out of calculating trust distributions and preparing tax returns for property trust groups.



The key features of CTS for Trusts are outlined below:

- Accounts integration module which mitigates the risk of manual data-entry, cuts down re-work due to changing accounts and facilitates real-time reporting;
- Tax return is simultaneously populated when calculating tax deferred amounts for distribution statements;
- Tree structure to provide comfort that all entities are accounted for;

Liability limited by a scheme approved under Professional Standards Legislation

Moore Stephens is a network of independent firms which are members of Moore Stephens International Limited – members in principal cities throughout the world

Serious about **Success**



- Roll-up of subsidiary entities to the head trust;
- Multi-user environment – i.e. individual files are generated for each trust allowing users to work on separate files at any one time;
- Automatic generation of tax calculations for quick and accurate decision-making;
- Record keeping and linking of all workpapers;
- Rollover function (including under/over provision);
- Cross-checks and validations to preserve the integrity of outputs;
- Hassle-free implementation, including customisation and training;
- Free helpline with access to fully-trained tax professionals;
- ATO approved tax return schedules (Trust Return Form, Capital Gains, Losses, Schedule 25A, Thin Capitalisation);
- Workpapers (Taxable Income, Tenant Incentives, Provisions, Equity Costs, Depreciation, Distributions, Capex , Other ITR Disclosures);
- User-friendly print and navigation features; and
- Developed within the Microsoft Excel/VBA environment, providing a tried and trusted working platform for users.

If you have any queries or would like a free demonstration of CTS for Trusts please contact Stephen O'Flynn or Jason Ch'ng of Moore Stephens on (03) 9614 4444.